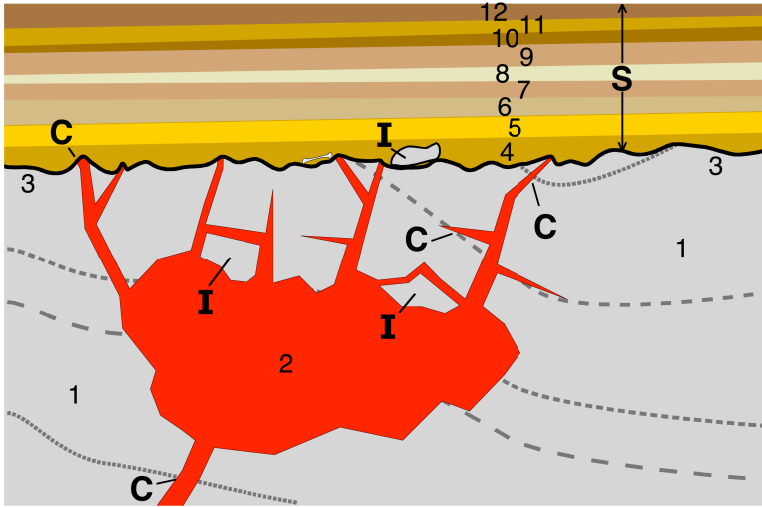


Relative dating: superposition, inclusions, and cross-cutting relationships

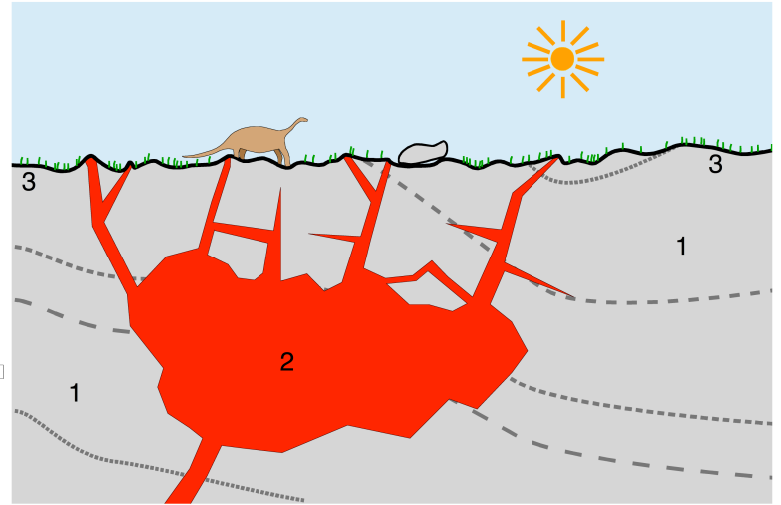
S In a sequence of layers of deposits, higher layers are successively younger.

I Bodies of rock included in surrounding bodies of rock are older than their hosts.

C Features cross-cutting other features are younger than the features they cut.



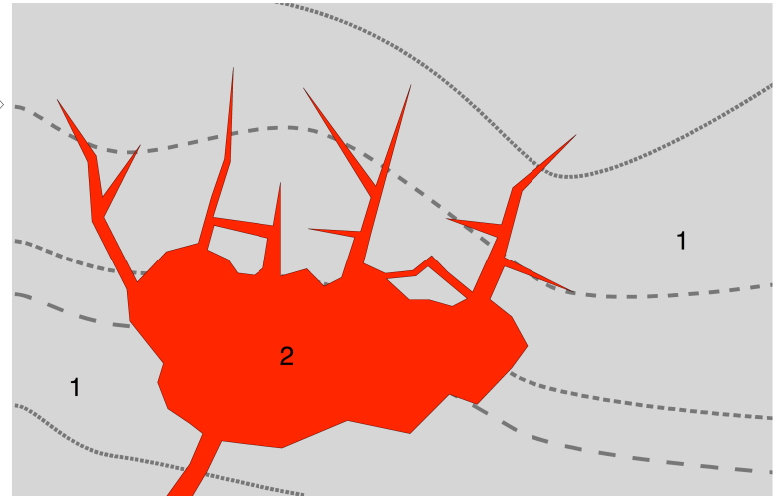
Deposition of sediments generating sedimentary strata



Erosion generating an unconformity (once buried)



Rock already deformed



Intrusion generating a pluton and dikes