

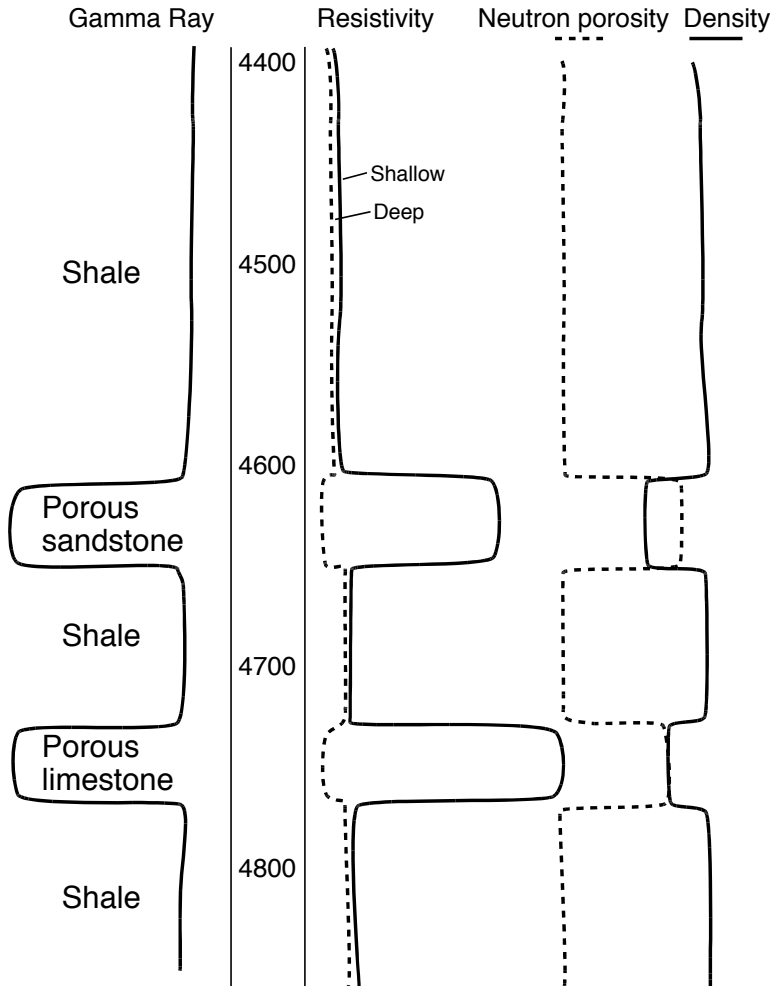
# Logs in transitional lithologies

Textbooks and instructional charts commonly show responses of logs to changing lithology in a very idealized way, with layers of rock that are internally uniform. That kind

of presentation is very useful in showing the log responses, but it ignores what every geologist knows: that thick beds of uniform rock are rare in nature. This page is a reminder

that logs will show transitional lithologies with transitional responses that must be understood for the geologist to reach a reasonable interpretation of the strata through which the borehole passes.

## Idealized log responses



## Less idealized log responses

