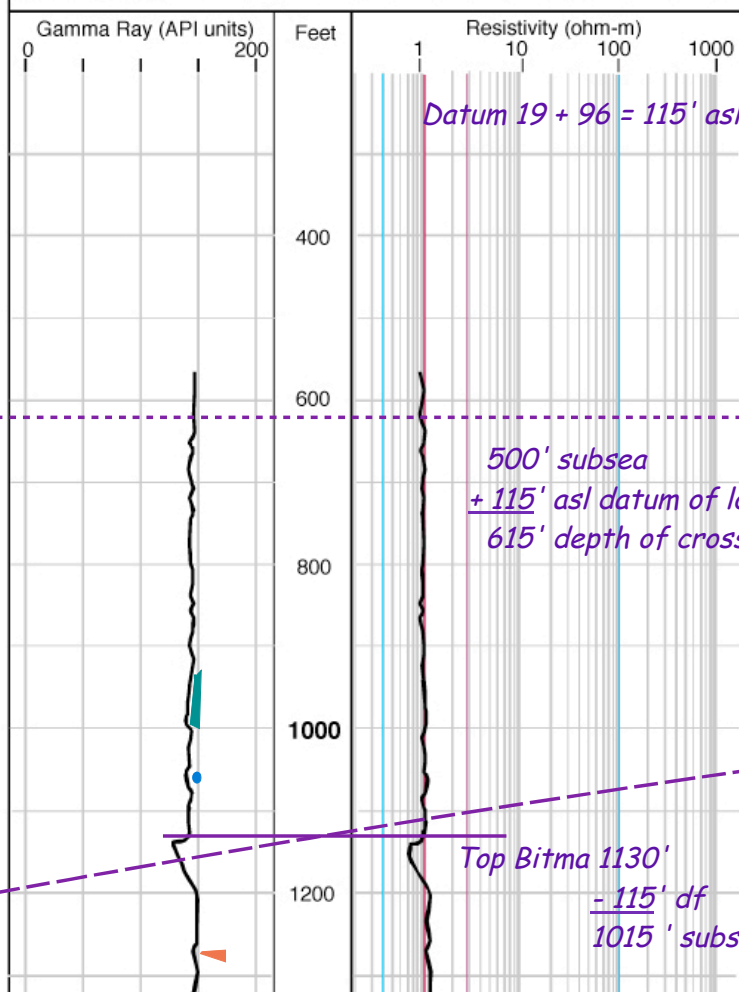


# Making a structural cross section IV: inferring structure

**Gesundklotz Logging Service** Paris Riyadh  
Houston Winterville

Company: Reeve Petroleum Well: M. Moore #1  
 Location: Section 56, Tract 56, eastern Blockistan  
 Log measured from: DF 19' above land surface;  
 Land surface elevation = 96 feet asl  
 Fluid in hole: Oil-based mud T.D.: 8405 feet



In Parts I, II, and III of this series we made a two-well cross section, and here we make a simple structural inference. Parts V to IX work through a five-well cross section that is somewhat more representative of meaningful cross sections.

A geological inference.

**Gesundklotz Logging Service** Paris Riyadh  
Houston Winterville

Company: Cooper Petroleum Well: K. Smith #1  
 Location: Section 66, Tract 71, eastern Blockistan  
 Log measured from: DF 20' above land surface;  
 Land surface elevation = 110 feet asl  
 Fluid in hole: Oil-based mud T.D.: 8735

