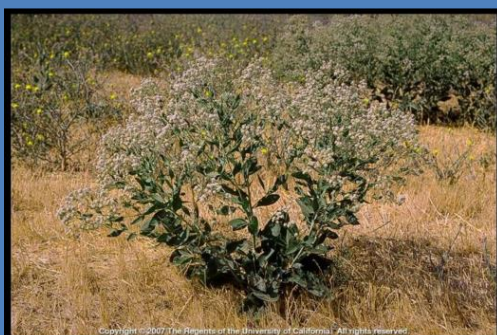
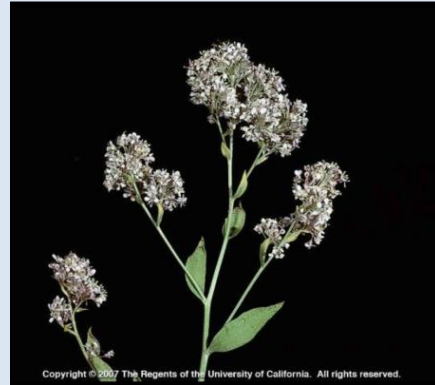


Lepidium latifolium

Perennial Pepperweed

Other common names: broad-leaved
peppergrass, tall whitetop

Brassicaceae, the mustard family
Category: CONTAINMENT



Diagnostic Characteristics

- Perennial; grows erect and up to 6 feet tall
- Basal leaves are lance-shaped with long petioles and serrated margins; basal leaves longer and wider than stem leaves
- Stem leaves are alternate, green to gray-green, lance-shaped to elliptic or oblong; margins entire to weakly serrated
- Flowers are white, 4-petaled, and borne in dense rounded clusters at branch tips

Background

- Native to southern Europe and western Asia
- Inhabits ditch banks, riparian areas, rights-of-way, meadows, flood plains, and croplands
- Reproduces by seed and vegetatively with creeping roots and root fragments; cultivation may increase infestations by spreading root fragments
- Often forms dense stands

Photo Credit:

J.M. DiTomaso, The Regents of the University of California

Perennial Pepperweed

Lepidium latifolium

Present

